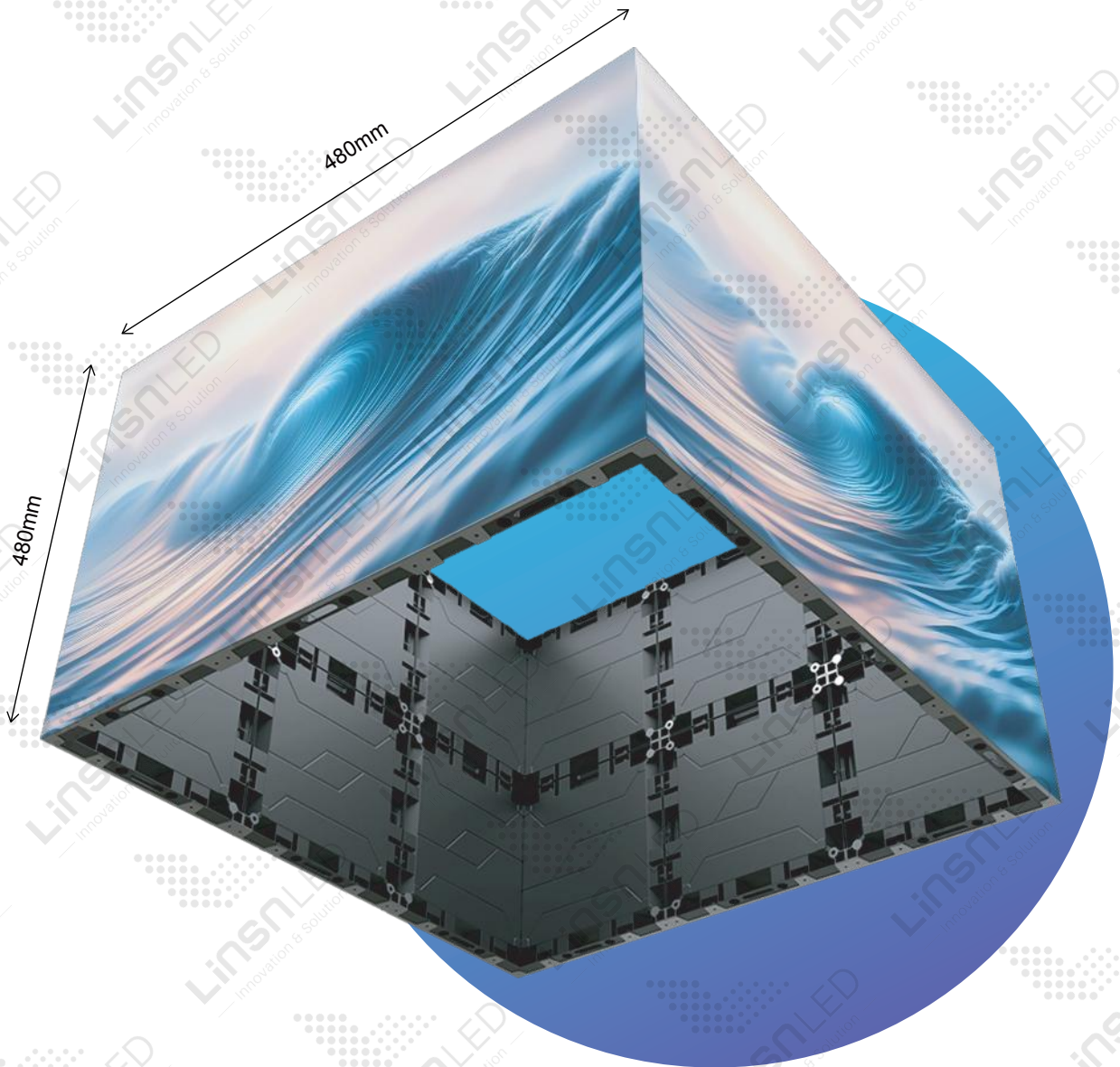


Fine Pixel LED Display

MA480 Series

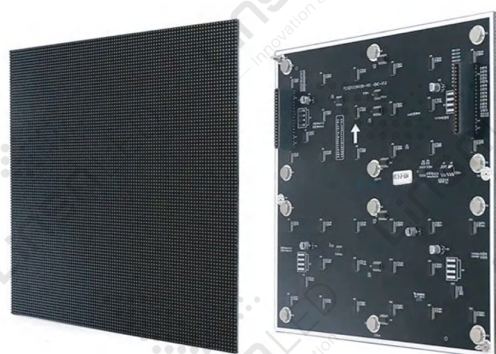
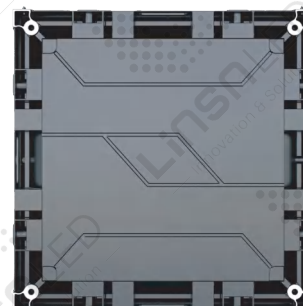
Perfect replacement for LCD displays. The die-cast aluminum cabinet guarantees a flat and seamless screen with excellent uniformity.



MA480-P1.875/2/2.5/3

MA480 HD LED Display

MA480 series has 240x240mm LED module size. Easy to install and with front maintenance service, saving your labor cost and time.



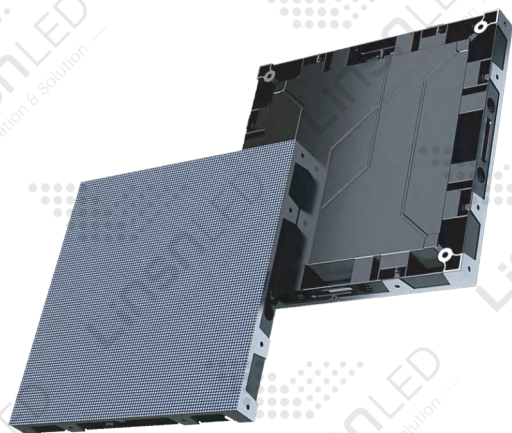
High Quality Module

Unique LED module design with the **size of 240×240mm** dimension. Easy installation and replacement, ultra-thin design.

Ultra Light Weight

Ultra lightweight design with **only 5.5 kg**. High-precision aluminum cabinet frame makes seamless splicing of images and video displays, offering you the perfect visual experience you desire from any angle.

5.5kg



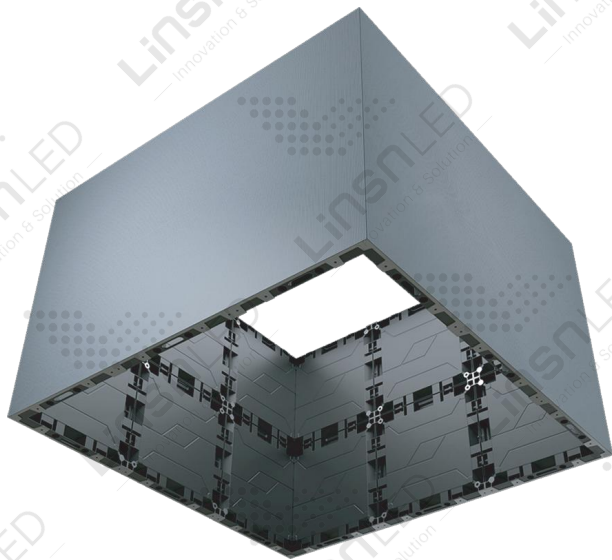
Modular Design

Magnetic suction structure can achieve fast maintenance and installation, maintenance **speed is 5 times higher** than traditional products, greatly saving customer maintenance time.



Frontal Service Design

Frontal service design allows easy access to LED receiving cards, HUB cards, power supplies, and LED modules. The system also features dual backup functions for both power supply and signal.



Can Be Used for Right-angle LED Display

With a **45°** angle edge, the 480x480mm series indoor LED display can be used to create a squared LED screen with right-angle configurations.

High Quality With Global Standards,
CE EMC, RoHs, FCC Certificated.

Specification

Pixel Pitch	P1.875mm	P2mm	P2.5mm	P3mm
Pixels per cabinet	256×256 (HxV)	240×240 (HxV)	192×192 (HxV)	160×160 (HxV)
LED lifetime	100,000h (video - 50% brightness)			
Brightness	800 - 1000 nits			
Module size	240×240mm			
Module resolution	128×128dots	120×120dots	96×96dots	80×80dots
Refresh rate	1920-3,840Hz			
Hor. viewing angle	140° +/-5° (@50% brightness)			
Vert. viewing angle	140° +/-5° (@50% brightness)			
Brightness uniformity	>98%			
Dimming	0-100%			
Grey Level	14bits			
Avg Power consumption	350 W/m ²	320W/m ²	300 W/m ²	280W/m ²
Max Power consumption	680 W/m ²	640W/m ²	620 W/m ²	600W/m ²
Operation power voltage	100-240V/50-60Hz			
Operational temperature	-10°C to +40°C/14°F to 104°F			
Operational humidity	10-80%			
IP rating	IP50 for Indoor			
Dimensions	480 x 480 x 80 mm (WxHxD)			
Weight	5.5 kg			
Serviceability	Full frontal service			
Certifications	CE, UL, FCC class A, RoHS, WEE, REACH			