

Sports Stadium LED Display

Sports stadium LED Display Product Recommendation

Steel LED Cabinet | Aluminum LED Cabinet | Magnesium Alloy LED Cabinet



- MA960 Series
- OF800 Series
- EV960 Series

Sports Stadium LED Display Main Features

Humanized Appearance Design & Protection of Athletes' Personal Safety

The LED display screens are utilized for advertising in and around sports stadiums, including football, basketball, badminton, and other venues. They broadcast advertising information repeatedly while spectators enjoy the thrilling games.



Versatile Use

Sports stadium LED screens can be used for indoor and outdoor stadium perimeter applications, as well as for rental at sporting events. It features a 3840Hz refresh rate and high-quality driver IC for smooth image playback without flicker, especially for certain large displays for live video programming.



Outdoor Stadium Perimeter Application



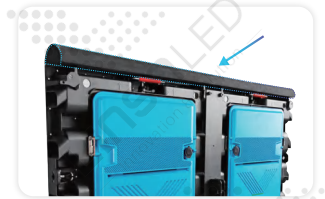
Indoor Stadium Perimeter Application

Reasonable Safety Design

Sports stadium displays need more protection, such as soft masks and pillowcases to protect not only the screen, but also the athletes or spectators who may hit the LED screen.



Soft Mask

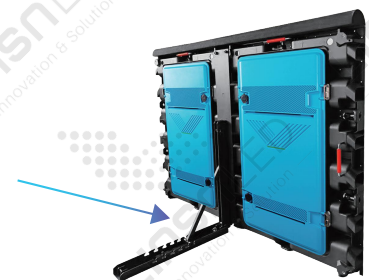
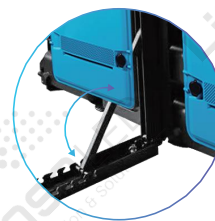


Pillowcases

0-90° Adjustable Supporting Bracket

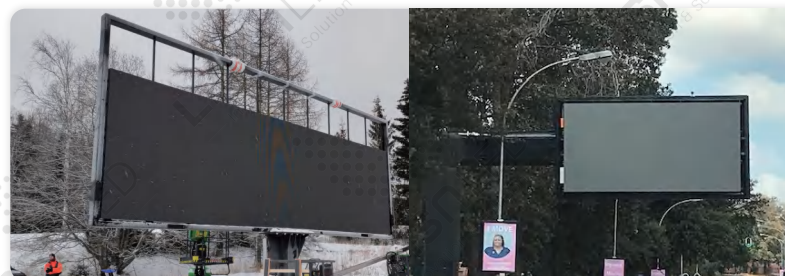
To enhance visibility, sport perimeter LED display can be adjusted with different angles of supporting bracket.

The brackets are solid but flexible, which makes sure the stable installation and elegant appearance.



High Protection Ability of IP65

Our outdoor LED screens can reach IP65 protection level, and have high durability to encounter changeable environment.



MA960 Series

MA960 960×960mm & 1280×960mm Series

- 320mmX160mm Standard LED Module for Rear Service
- 320mmX320mm Standard LED Module for Front Service

MA960 LED cabinet is lighter and easier to install, weighing 28kg per cabinet for the 960mm×960mm size, equipped with pillowcases and rear brackets. Additionally, the quick-lock mechanisms enhances user-friendliness. Cabinets sized 1280mm×960mm available.



Seamless splicing

Equipped with a unique lock, each cabinet can be precisely adjusted in six directions. And can achieve an ultra-flat and seamless cabinet alignment.

Multi installation ways

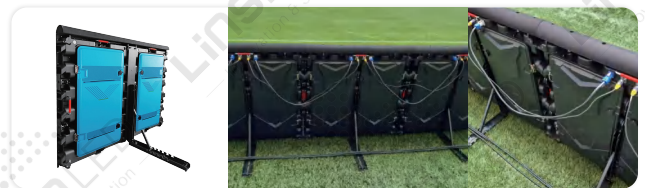
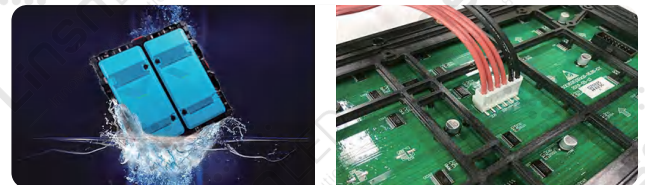
Supports fixed installation and rental installations. For perimeter installation LED displays, rubber cushions and brackets are needed for enhanced stability.



Energy saving >50% design

Using separate R/GB power supplies to accurately distribute current to the lamp beads, reducing power consumption. Uniform heat distribution, constant color temperature, no color deviation, no color block, good consistency.

The MA960 series (960×960mm | 1280mm×960mm) magnesium alloy LED display is designed for multi-functional use and is suitable for sports stadium applications.



OF800 Series

OF800 800×900mm & 1600×900mm Series

- 1600mm×900mm LED Display Available
- Frontal Service Design for Easy Installation

The OF800 series 1600×900mm outdoor frontal service LED display is the latest outdoor fixed stadium LED display with frontal service, featuring a 1600×900mm cabinet and 400×300mm module size.



Perfect cabinet design

OF800 outdoor frontal service LED screen adopts top-class design standards and industry-leading ideas. The red module handles gives the entire LED display an elegant and noble appearance.



Seamless splicing

With its seamless splicing design and fast locks, the LED display achieves gap-free installation and ultra-high flatness across the screen.



EV960 Series

EV960 960*960mm & 1600*900mm Series

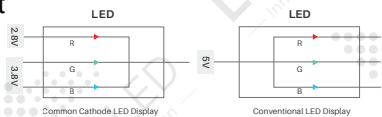
- Standard Cabinet Size 960/1600*960mm
- Super Quick Installation and Maintenance

EV960 series energy-saving sports stadium LED display is the latest common cathode aluminum display, available in sizes of 960*960mm and 1600*900mm. It boasts a high IP66 waterproof rating and features a panel size 480*320mm with low power consumption.



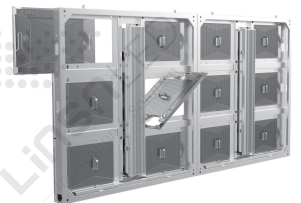
Saving power

The CCES technology and dual voltage output can save more power consumption, thus saving your electricity cost.



Saving space

Dual services available, EV960 LED panels support rear maintenance that does not need back room.



Saving maintenance cost

High protection ability includes waterproof and fireproof ability (TUV certificates and IP66 certificates). You can also benefit from the easy maintenance and installation design.



Remove	Time
Front service for module	20 seconds
Back service for module	23 seconds
HUB card (back maintenance)	78 seconds
Power supply (back maintenance)	70 seconds
Power box (front maintenance)	200 seconds